

SHEPARD HOOKS

The Shepard Hooks will come with:

- Hook
- Base plate
- Chandelier + rigging
- Optional - 80lb base weight(s)

To assemble:

1) Place the base plate where it wants to go, and put base weight(s) on it. There is a notch on the weights so that they will sit neatly on the base plate, and each weight has (4) feet that should go on the bottom

2) Insert the hook into the vertical sleeve in the base plate, and tighten the bolt. The hook should curve in the direction of the base plate.

3) Rig the chandelier onto the eye at the top of the hook. The exact rigging needs of each chandelier will be different, but it's the same process as rigging to anything else. Plus, we can often prep the hanging hardware in the shop to be the exact length you need, so you will not have to adjust height on site

4) Plug in the chandelier to the female add-a-tap located at the eye hook. All power is pre-run inside the hook, and comes out a hole at the bottom.



HOOK

HOOK (top)

Add-a-tap to plug in chandelier
Eye bolt to rig chandelier from



HOOK (bottom)

Zip comes out a hole

Hook slides in here

Bolt to hold hook in place



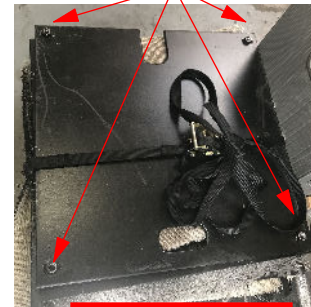
BASE PLATE

Notch slides over verticle sleeve in base plate

(4) welded on nuts act as feet



BASE WEIGHT (top)

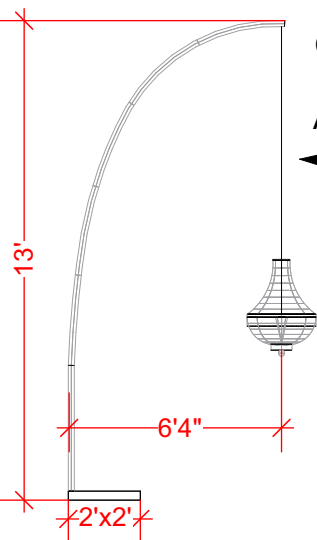


BASE WEIGHT (bottom)

FAQs

Q: Do these need base skirts and/or chandelier socks?

A: All parts of the Shepard Hook setup are painted black, so they do not need additional masking. They do usually need socks over the chandelier rigging, which will come with the chandeliers



Q: What are the dimensions of the assembled Shepard Hook?

A: Look at this!

Q: Can these be built in a different orientation, so that the chandelier is not hanging towards the base plate?

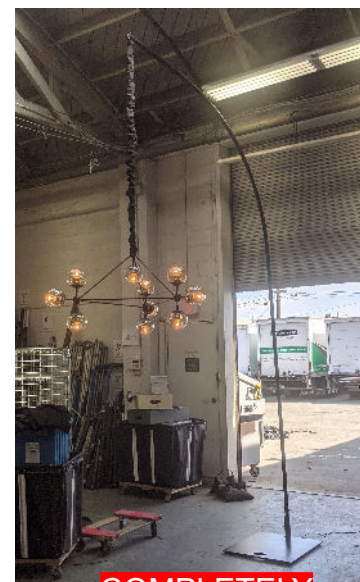
A: These are designed to be hung as shown, but technically they can be set up in any orientation. Different orientations will require additional weight

Q: How many base weights do I need?

A: That depends on the weight of the chandelier you are hanging, whether you are placing them inside or outside, and the orientation of the hook. Luckily, we've made you some tables:

INDOOR USE	CHANDY WEIGHT	# BASE WEIGHTS NEEDED	
		BASE TOWARDS CHANDY	BASE AWAY FROM CHANDY
	≤10 lbs	0	1
	11-15 lbs	1	2
	16-20 lbs	1	too heavy!
	21-25 lbs	2	↓
	>25 lbs	too heavy!	↓

OUTDOOR USE	CHANDY WEIGHT	# BASE WEIGHTS NEEDED	
		BASE TOWARDS CHANDY	BASE AWAY FROM CHANDY
	≤10 lbs	1	2
	11-15 lbs	2	too heavy!
	16-20 lbs	2	↓
	21-25 lbs	too heavy!	↓
	>25 lbs	↓	↓



COMPLETELY ASSEMBLED