



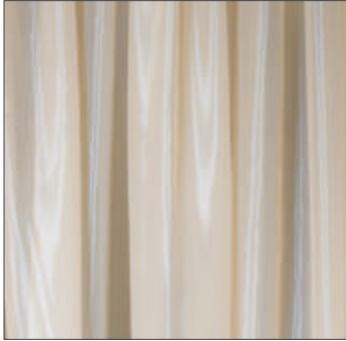
got drape?

brought to you by the same  
folks who got light.

# sheer collection

there's actually nothing "sheer" about our sheer collection. when gathered and bunched with fullness, our sheer draping becomes opaque, yet still retains a soft, lightweight, and ethereal look. made from a rich poly-silk material, the draping takes and reflects light with stunning results.

---



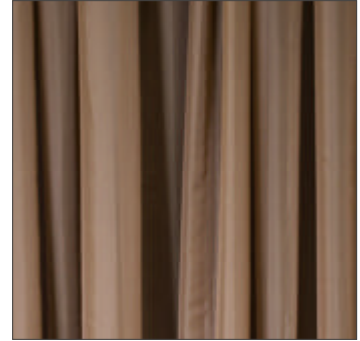
## **ivory**

26'h x 10'w  
18'h x 10'w  
12'h x 10'w



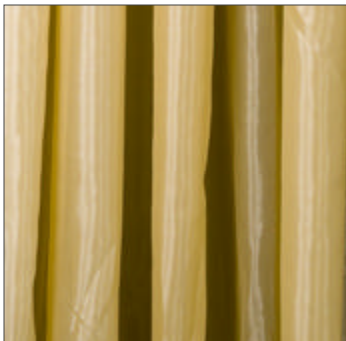
## **snow white**

18'h x 10'w  
12'h x 10'w



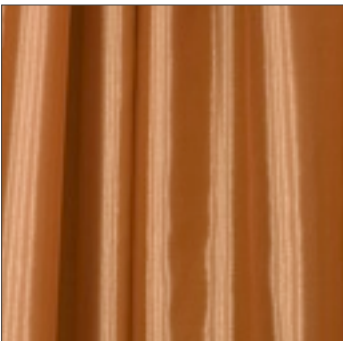
## **mocha**

18'h x 10'w  
12'h x 10'w



## **butterscotch**

12'h x 10'w



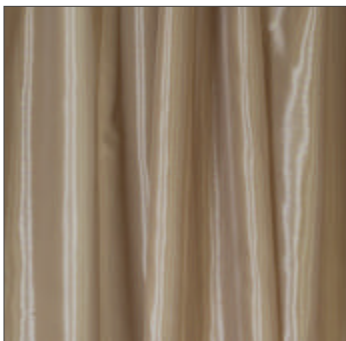
## **spice**

18'h x 10'w



## **silver**

18'h x 10'w



## **clay**

12'h x 10'w



## **orchid**

18'h x 10'w

sheer

# essential collection

our essential collection consists of an array of velvets and satins, enough to enclose, soften, divide, color, mask, or swag. you dream it, we'll drape it. our custom lightweight fabrics are absurdly quick to install, inherently flameproof and reflect light with amazing results.

---



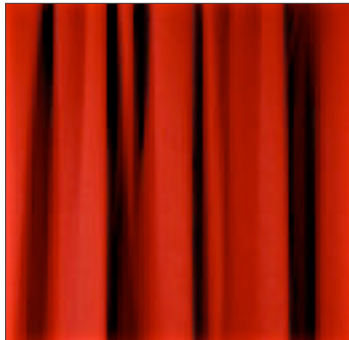
**latte velvet**  
18'h x 15'w



**chocolate velvet**  
18'h x 15'w  
16'h x 10'w



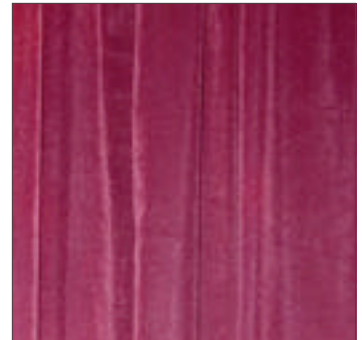
**silver velvet**  
18'h x 15'w



**ruby mystique**  
18'h x 10'w



**black velvet**  
18'h x 15'w  
12'h x 13'w



**merlot velvet**  
16'h x 10'w

essential

---

# petite collection

our petite line solves petite problems quickly. available in smaller quantities, this boutique custom made collection is perfect for doorway swags, band or stage backdrops, or small dividing walls with a punch of color and character.

---



**star drape**  
16'h x 30'w



**citron mystique**  
12'h x 14'w



**cranberry crush**  
16'h x 10'w



**stone damask**  
12'h x 12'w



**barbie pink**  
12'h x 7'w



**fog velvet**  
12'h x 14'w

petite